

you can
Canon

iR1610F
iR1600

office intelligence

*Let digital flexibility
lighten your workload*



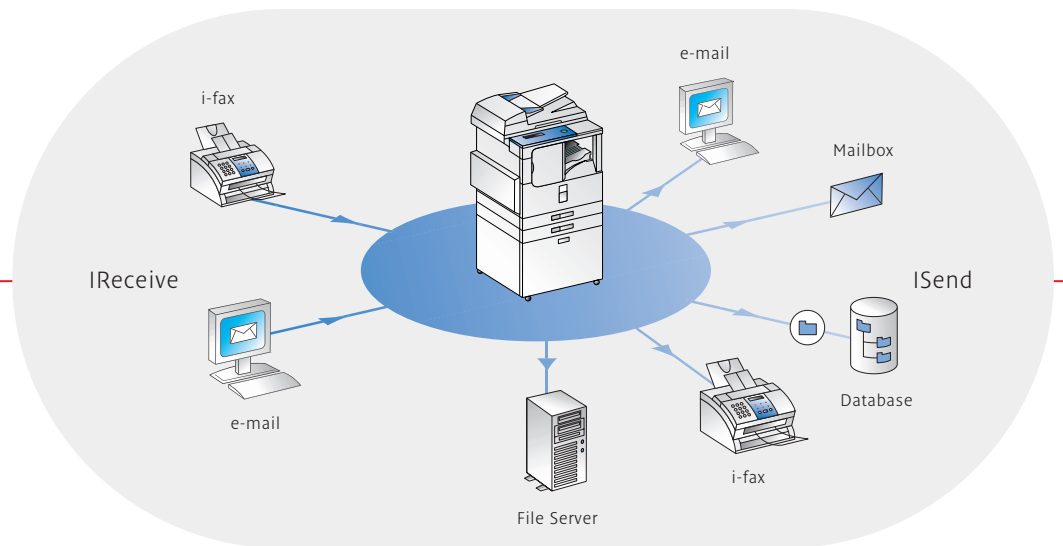
iR1610F

Copy, fax, scan, print ... with digital power it's your choice

Start with high-quality digital copying and faxing as standard. Then add on scanning and network printing to give your business an added advantage. Thanks to a unique modular design the choice is yours, with Canon's new compact and highly cost-effective systems. Select the iR1610F for 16 ppm document output. You also benefit from an innovative range of networked, intelligent features to speed up and simplify your entire workflow. You can collect, share, manage and store all your documents digitally. Thus saving time and cutting down on filing, forwarding and paper costs - to increase office efficiency. What's more, whatever your requirements, the system's flexible design makes it easy to adapt to your specific business applications and changing business needs.



Network printing with an intelligent workflow



PRODUCTIVE PRINT OPTION

Transform your iR1610F into a fast and flexible network printer for all your staff, simply by adding on Canon's optional print and networking capability. Your business benefits from professional print productivity. Plus you can print on a wide range of media, with full finishing support. Print resolution rises to an extra high 2400 x 600 dpi with Canon's AIR smoothing technology. While optional PostScript™ emulation is available to fully optimise your printing output.

INTELLIGENT COMMUNICATION

The network/print capability allows you to take full advantage of intelligent features – making management of all your electronic documentation far easier. Super G3 fax functionality speeds up communication, with advanced features such as multiple sending. Documents can also be scanned into your system for direct distribution to i-fax and email

addresses... using Canon's unique intelligent sending capability. They can even be sent to a file server for storage. Increasing productivity and helping to reduce your hard copy costs. You can also receive and route all incoming information so that it can be captured, shared and worked on by all authorised users on the network. So document distribution is more efficient, flexible and faster than ever before.

iR1610F

Ensuring ease... all the way



DELIVERING SUPERIOR DIGITAL COPYING

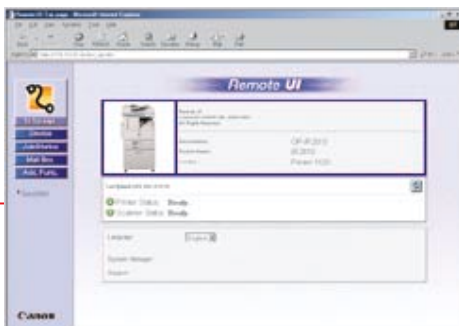
The iR1610F model deliver high definition, digital copying - at speeds of 16 ppm respectively. Reliable output is matched by consistently high copy quality - even for the finest text and most complex charts. Mixed-sized documents can be fed directly in the ADF (standard Automatic Document Feeder) to add to convenience. Super G3 faxing, with a range of advanced functions, is also supported as a standard feature - enhancing overall office productivity.

SIMPLICITY AND RELIABILITY

Welcome to effortless and reliable operation - whether for copying, printing, scanning or faxing. There is a large and clear control panel featuring special 'short-cut' buttons for extra ease. What's more, when the system is connected to a network, a remote user interface allows smooth, seamless handling of all print jobs direct from every desktop.

FLEXIBLE FINISHING OPTIONS

There are two productive and space-saving finishing options: a built-in finisher offering sorting and stapling functions - as well as an inner 2-way tray that automatically separates out all your copies and prints. Finishing is supported direct from connected desktops, to increase efficiency even further.



SELECT THE SMARTEST SOLUTIONS

As a leading IT provider, Canon supplies far more than just suitable hardware. Our Business Intelligence skills enable us to provide a wide range of software and service solutions – customised to meet all your precise applications and specific needs. By fully integrating your document, print and network management systems, we can show you how to achieve more streamlined and extremely cost-effective office operations. You decide exactly what you want, we are ready to deliver practical solutions.

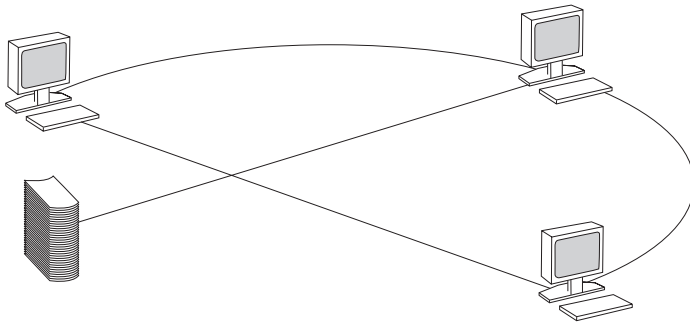
READY FOR THE FUTURE

By combining a highly versatile system with flexible and supported solutions, we enable you to secure a maximum return on your investment while reducing total cost of ownership. Our aim is to deliver a total solution offering immediate benefits in terms of increased productivity... with built-in versatility to meet all your future needs, as your business grows. Thus ensuring that your company has a truly competitive advantage - both in the short and long term.



iR1600

- 16 ppm output (iR1600)
- Fully featured digital copying
- Network printing capability
- Professional image quality
- Compact and reliable design
- Up to A3 paper handling
- Easy and efficient operation
- Extensive paper supply
- Built-in finishing options



Add on Canon's network printing capability to increase productivity

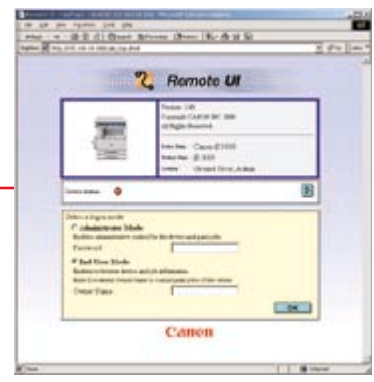
ENABLING EFFICIENT SOLUTIONS

Benefit from a compact, cost-effective digital copier that delivers both quality and productivity. Select the entry-level iR1600 for smaller workgroups. You profit from a flexible, modular design that allows easy configuration to suit your exact needs, including a network printing capability. You can even take advantage of Canon's smart solutions that provide powerful applications for workflow management and full document accounting. Protecting your investment as your business grows.

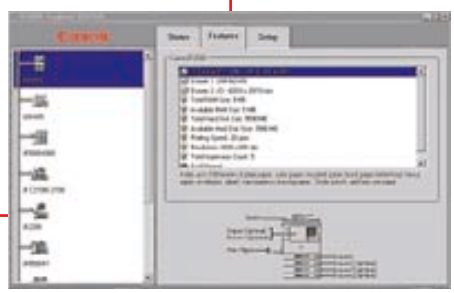
ENHANCING IMAGE QUALITY

Both digital systems offer a high 1200 x 600 dpi resolution, to deliver consistently high image quality for text and images. Include the network printing option and the resolution rises to 2400 x 600 dpi, with AIR smoothing technology. Optional PostScript® and PCL emulations are available to maximize printing output, providing a truly professional finish.





Enhance workgroup efficiency via the Remote User Interface



Simplify systems management with Canon's NetSpot@ Suite

PRODUCTIVE ACCESSORIES

Innovative and space-saving finishing options include a built-in finisher offering full sorting and stapling functions. Or select an inner 2-way tray that separates out copies and prints. An ADF (Automatic Document Feeder) handles all originals smoothly. Plus the standard paper supply can be supplemented by up to three additional 250-sheet cassettes.

INTEGRATED EASE

A clear, intuitive control panel ensures effortless operation at all times. The network printing option includes a remote UI (User Interface) for workgroups - delivering seamless handling of all print jobs direct from the desktop. A 10 GB hard disk can also be added to provide storage and spooling facilities for network printing, improving printing efficiency.

SOLUTIONS TO SAVE TIME AND MONEY

Digital versatility lets you share departmental printing resources far more efficiently. So now you can handle peak workgroup printing demand smoothly, saving time and increasing reliability. While full document accounting enables effective cost control and optimum allocation of all resources.



iR1610F/iR1600 Specifications

Base Specification

Type: desktop type
Copying System: laser dry electrostatic transfer system
Platen: fixed
Originals: paper sheet, books and three-dimensional objects up to 2 kg
Copy Speed: 16ppm (iR1610F) / 16ppm (A4) (iR1600)
Maximum Original Size: A3
Copy Sizes: A6-A3
Scanning Resolution: 600 x 600 dpi/256 levels
Printing Resolution: 1,200 x 600 dpi (copy), 2,400 x 600 dpi (PDL print)
Zoom: 50%-200% (1% increments)
FCOT: 8.2 sec. approx.
Warm-up Time: 30 sec. or less
Multiple Copies: 1-99
Dimensions (W x D x H): 615 x 631 x 662 mm (iR1610F) 615 x 631 x 560 mm (iR1600)
Weight: 44 kg iR1610F, 38 kg iR1600
Power Consumption: 940 W or less
Paper: 60 to 90 g/m ² cassette 60 to 128MB g/m ² (bypass)
Input Capacity: 250 sheets x 1 bypass capacity 100 sheets
Paper Options: optional cassettes: up to 250 x 3, finisher, 2 way inner tray, ADF
Image Memory: 16MB standard, up to 80MB (iR1610F) 48MB (iR1600) (optional)
Fax (iR1610F)
Modem: 33.6Kbps (iR1610F)
Compression: MR, MH, MMR, JBIG (iR1610F)
Scanning Speed: approx. 1 sec/page (iR1610F)
ADF Capacity: 50 pages A4 (iR1610F)
Fax Memory: 2MB standard (up to 57MB optional memory upgrade) (iR1610F)

One Touch Dial: 63 locations (iR1610F)

Coded Speed Dial: 137 (iR1610F)

Group Dial: 199 (iR1610F)

Send (Optional) (iR1610F)

Send to: e-mail, G3 Fax, iFax, FTP (iR1610F)

File Format: TIFF (MH/MR/MMR), PDF Vers 1.3 (iR1610F)

No of Addresses: 200 (iR1610F)

Sending Resolution: 200x100dpi, 200x200dpi, 200x400dpi; 400x400dpi (iR1610F)

Printing (Optional)

Processor: Power PC405 200MHz RISC processor

RAM: 8MB (Up to 72MB)

PDL: PCL5e / PCL6 (PS3 - optional)

Resolution: 600 x 600 dpi, 256 Tones (up 2,400 x 600 dpi with AIR)

Printing Speed: 16ppm

Paper Size: up to A3

Hard Disk: 10GB (optional)

Network Connectivity (Optional)

Topology: USB, Parallel, Ethernet (10/100BaseTX) (optional)

Network Protocol: TCP/IP (LPD/LPR), IPX/SPX (Pserver/NDS/Rprinter/Nprinter), AppleTalk (PAP)

Supported OS: Windows® 95/98/NT4.0/2000/ME/XP, Mac OS 7.5 or later, Solaris 1.1x, 2.5 or later

Optional Accessories

finisher L1 • inner 2 way tray • 32/64MB memory expansion • card reader E1 • cassette feeding module (1 tray) • 3 cassette feeding module • pedestal high & low • printer board • ethernet network interface adapter • Postscript module • hard disk • Flash ROM module



iR1600



iR1610F

you can
Canon

Canon Inc.
30-2, Shimomaruko 3-Chome, Ohta-ku,
Tokyo 146-8501, Japan
www.canon.com

Europe, Africa and Middle East
Canon Europa N.V.
P.O. Box 2262, 1180 EG Amstelveen,
the Netherlands
www.canon-europa.com

English Edition
© Canon Europa N.V., 2002 (0503)

Canon (U.K.) Limited
Woodhatch, Reigate
Surrey RH2 8BF
Telephone No: 08000 353535
Facsimile No: 01737 220022
www.canon.co.uk



™ All company and/or product names are trademarks and/or registered trademarks of their respective manufacturers in their markets and/or countries. Canon reserves the right to change specifications without notice.